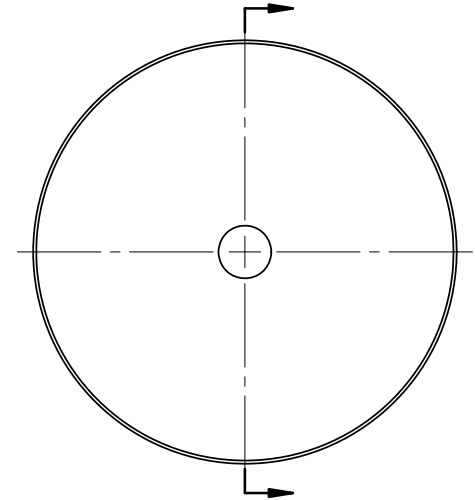
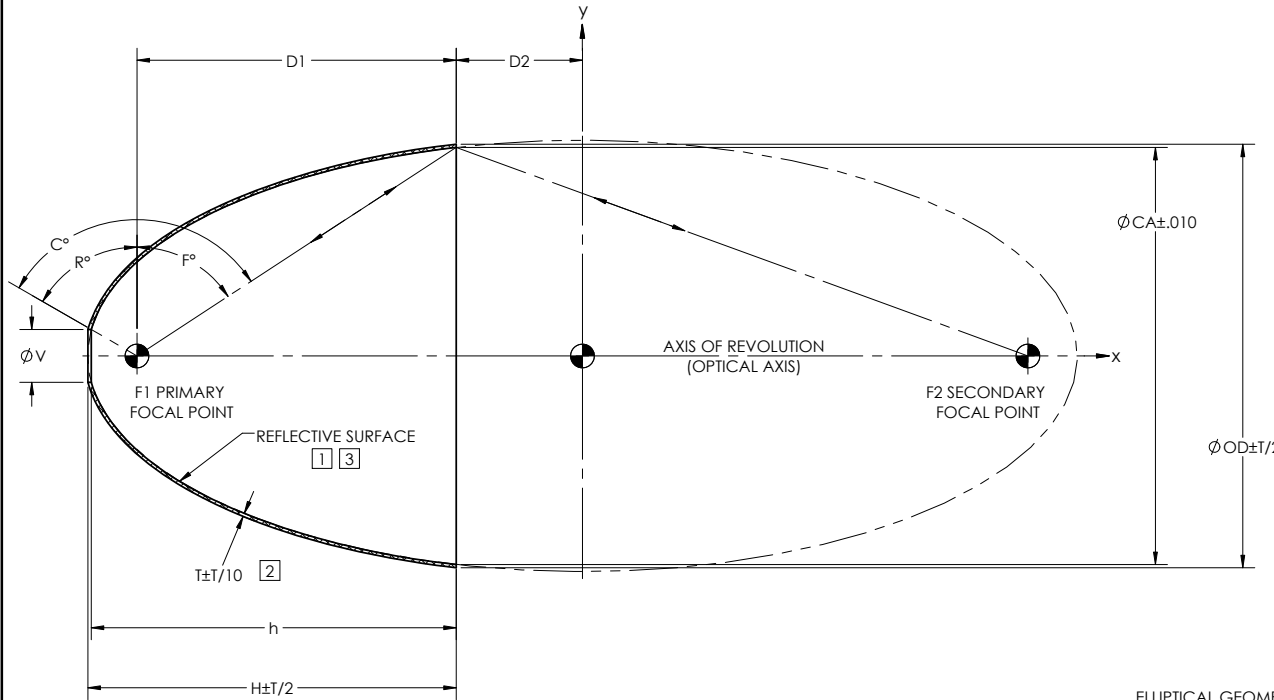


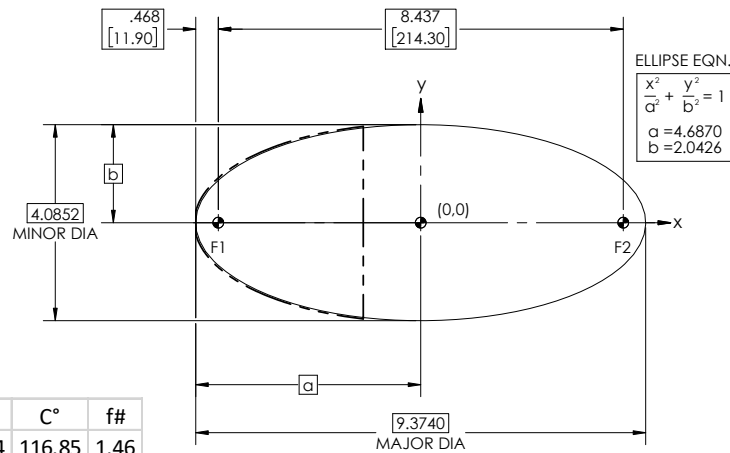
NOTES: UNLESS OTHERWISE SPECIFIED

- 1 ELECTROFORM REFLECTOR FROM MASTER TOOL WITH SPECULAR SURFACE QUALITY OF 80-50 SCRATCH-DIG PER MIL-PRF-13830B.
- 2 NOMINAL THICKNESS (T) MAY VARY ± T/4 WITHIN .25 OF EDGES.
- 3 REFLECTIVE SURFACE COATING TO BE SEPARATELY SPECIFIED.

REVISIONS			
REV	DESCRIPTION	DATE	APPROVED
Ø	INITIAL DRAWING RELEASE	06/15/99	GFW
A	REMOVED -.030 THICKNESS WAS .050	12/12/00	MSP
B	ADDED -3	06/21/05	GFW
C	ADDED D-4	08/05/11	RRS
D	UPDATED DRAWING FORMAT	08/15/17	RRS



ELLIPTICAL GEOMETRY DATA



DASH NO.	CA	V	OD	T	D1	D2	H	h	R°	F°	C°	f#
E214	3.950	0.500	4.010	0.030	3.023	1.196	3.487	3.456	60.01	56.84	116.85	1.46
E214-0100	2.972	0.500	3.037	0.030	1.003	3.216	1.467	1.436	60.01	34.01	94.03	2.55
E214-0200	2.972	0.750	3.037	0.030	1.003	3.216	1.424	1.392	46.04	34.01	80.05	2.55
E214-0300	3.950	0.500	4.010	0.030	3.023	1.196	3.487	3.456	60.01	56.84	116.85	1.46
E214-0400	2.972	0.512	3.037	0.030	1.003	3.216	1.465	1.434	59.32	34.01	93.33	2.55

NOTE: THE "E214" DASH NO. IS THE THEORETICALLY LARGEST REFLECTOR THAT CAN BE FORMED ON EXISTING MASTER TOOLING.

UNLESS OTHERWISE SPECIFIED DIMENSIONS ARE IN INCHES (mm) GD&T PER ASME Y14.5-2009 DO NOT SCALE DRAWING TOLERANCES		CONTRACT NO. 98-E214	optiforms® 42310 WINCHESTER RD. TEMECULA, CA 92590 WWW.OPTIFORMS.COM	
FRACTIONS ± 1/16	DECIMALS .XXX ± .005	DRAWN JIW DATE 08/15/17	REFLECTOR, ELLIPTICAL 8.437"/214mm (F1-F2)	
ANGLES ± 1/2°		CHECKED DATE		
SURFACE ROUGHNESS √		ENGR RRS DATE 08/15/17	SCALE 1:1	
DEBURR SHARP EDGES & HIDE RING: D1 IS MAX. CHAMFER THREADS Ø1 PAST ROOT DIAMETER		MATERIAL ELECTROFORMED NICKEL - LSSN TYPE 1	SIZE C CAGE CODE 0Y1Y4 DWG. NO. E214 REV D	
NEXT ASSY	USED ON	FINISH	SCALE 1:1 WT. (REF) CAD NO. E214 SHEET 1 OF 1	
APPLICATION		THIRD ANGLE PROJECTION	SEE NOTE 3	