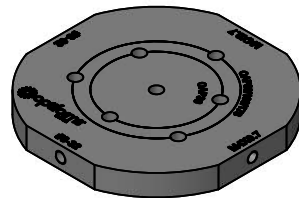
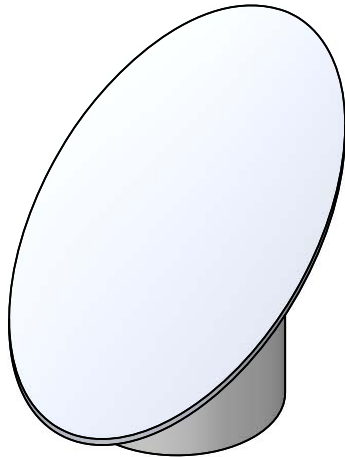
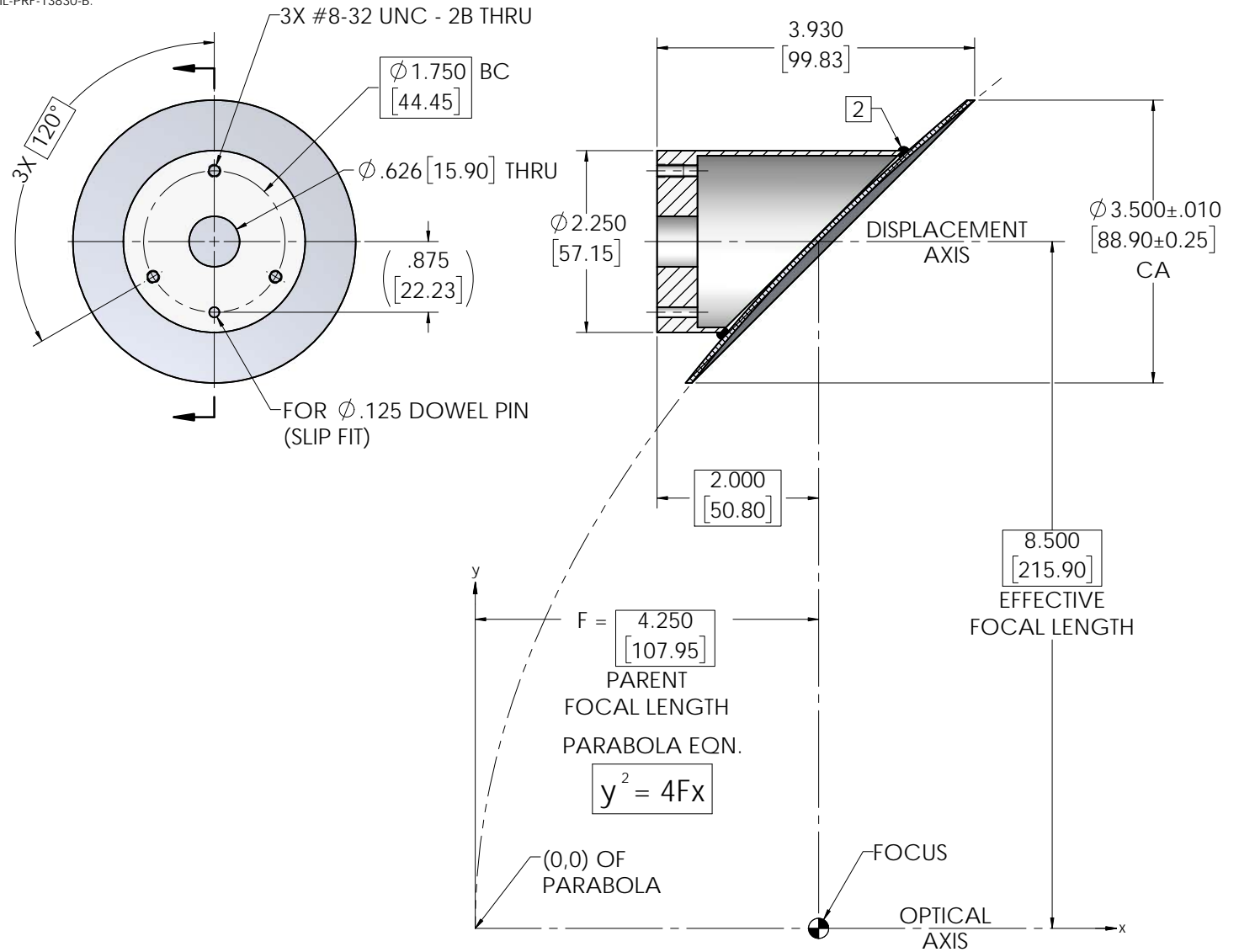


INFORMATION IN THIS DRAWING IS FOR REFERENCE ONLY

REVISIONS			
REV	DESCRIPTION	DATE	APPROVED
Ø	INITIAL DRAWING RELEASE	11/28/17	JPH

NOTES: UNLESS OTHERWISE SPECIFIED

- REFLECTOR SURFACE QUALITY: ELECTROFORM REFLECTOR FROM MASTER TOOL WITH SPECULAR SURFACE FINISH OF 80-50 SCRATCH-DIG PER MIL-PRF-13830-B.
- MOUNT BONDED TO REFLECTOR USING EPOXY
- REFLECTOR: ELECTROFORMED - NICKEL LSSN TYPE 1. MOUNT: 6061-T6 ALUMINUM, BLACK ANODIZE FINISH.



OPTIONAL ACCESSORY: 1046-003
(UNIVERSAL OAP ADAPTER)

UNLESS OTHERWISE SPECIFIED DIMENSIONS ARE IN INCHES [mm] GD&T PER ASME Y14.5-2009 DO NOT SCALE DRAWING		CONTRACT NO. 17-OAP108		optiforms® 42310 WINCHESTER RD. TEMECULA, CA 92590 WWW.OPTIFORMS.COM	
TOLERANCES		DRAWN JPH	DATE 11/28/17	OFF-AXIS ASSY, PARABOLIC OAP108 SEGMENT	
FRACTIONS ± 1/16	DECIMALS XXX ± .02 .XXX ± .005	CHECKED	DATE	SIZE C	CAGE CODE 0Y1Y4
SURFACE ROUGHNESS DEBURR SHARP EDGES & HOLES (RMS) .015 MAX. CHAMFER THREADS .01 PAST ROOT DIAMETER		ENGR RRS	DATE 11/28/17	DWG. NO. OAP108-0000-XXXX	REV Ø
THIRD ANGLE PROJECTION		SEE NOTE 3		SCALE 1:1	WT (REF) CAD NO. OAP108
		FINISH N/A		SHEET 1 OF 1	