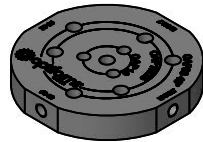
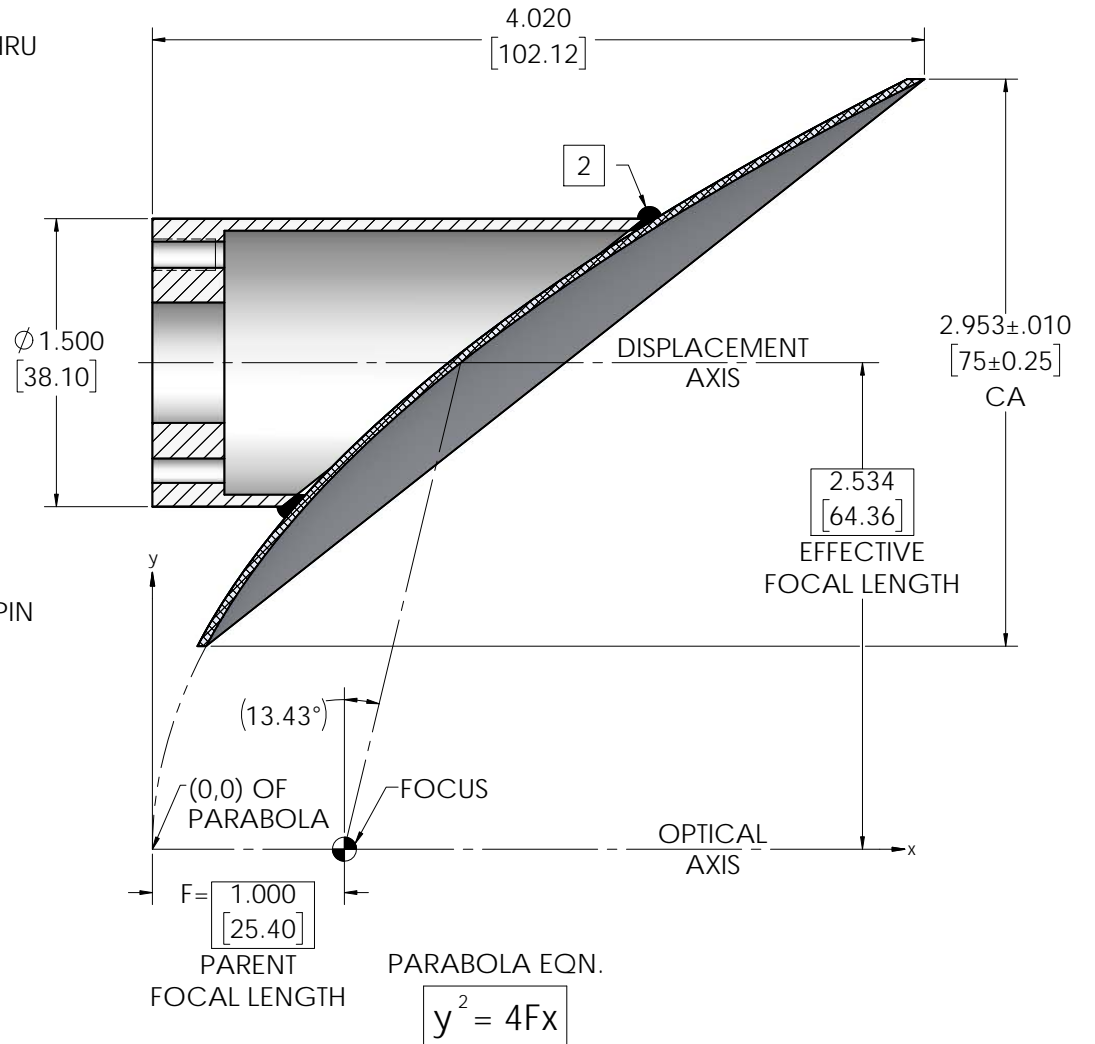
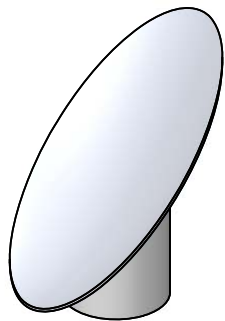
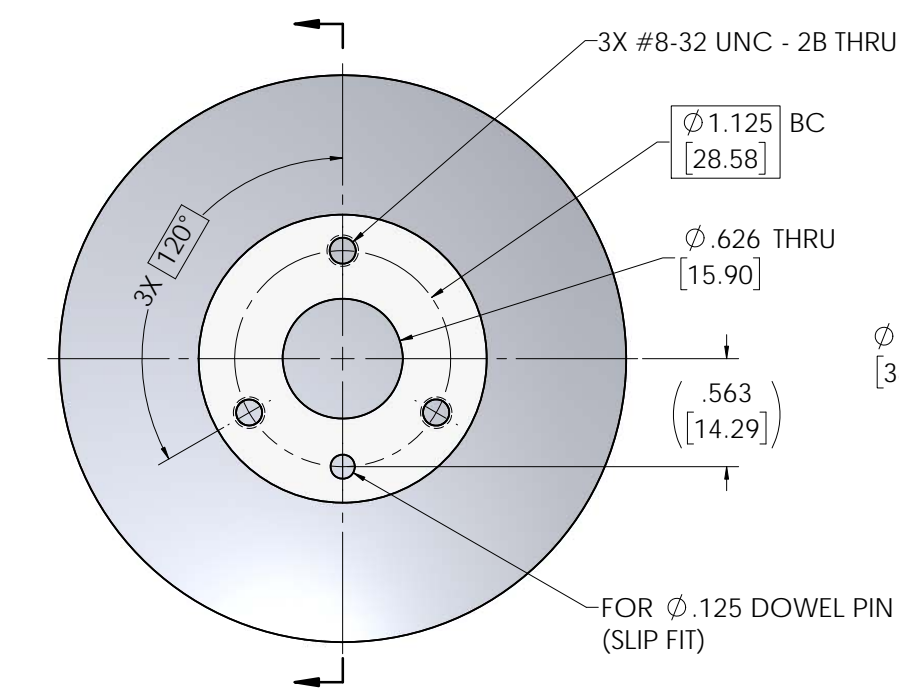


INFORMATION IN THIS DRAWING IS FOR REFERENCE ONLY

REVISIONS			
REV	DESCRIPTION	DATE	APPROVED
Ø	INITIAL DRAWING RELEASE	09/23/16	JMK
A	REVISED TO CURRENT STANDARDS	11/16/17	JPH

NOTES: UNLESS OTHERWISE SPECIFIED

- REFLECTOR SURFACE QUALITY: ELECTROFORM REFLECTOR FROM MASTER TOOL WITH SPECULAR SURFACE FINISH OF 80-50 SCRATCH-DIG PER MIL-O-13830A.
- MOUNT BONDED TO REFLECTOR USING EPOXY.
- REFLECTOR: ELECTROFORMED - NICKEL LSSN TYPE 1.
MOUNT: 6061-T6 ALUMINUM, BLACK ANODIZE FINISH.



OPTIONAL ACCESSORY: 1046-002
(UNIVERSAL OAP ADAPTER)

UNLESS OTHERWISE SPECIFIED DIMENSIONS ARE IN INCHES [mm] GD&T PER ASME Y14.5-2009 DO NOT SCALE DRAWING		CONTRACT NO. 14-OAP25		optiforms® 42310 WINCHESTER RD. TEMECULA, CA 92590 WWW.OPTIFORMS.COM	
TOLERANCES		DRAWN JMK	DATE 09/23/16	OFF-AXIS ASSY, PARABOLIC OAP25 SEGMENT	
FRACTIONS ± 1/16 DECIMALS ± .02 ANGLES ± 1/2°		CHECKED	DATE		
SURFACE ROUGHNESS √		ENGR KMT	DATE 09/23/16	SCALE C	
DEBURR SHARP EDGES & HOLES RMB .015 MAX CHAMFER THREADS Ø1 PAST ROOT DIAMETER		MATERIAL		CAGE CODE OY1Y4	
THIRD ANGLE PROJECTION		SEE NOTE 3		DWG. NO. OAP25-0000-XXXX	
		FINISH		REV A	
		SCALE 2:1		SHEET 1 OF 1	
		WT. (REF) 0.2 lbs		CAD NO. OAP25-0001	