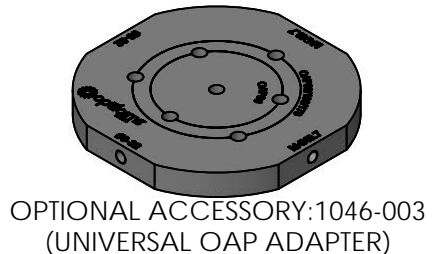
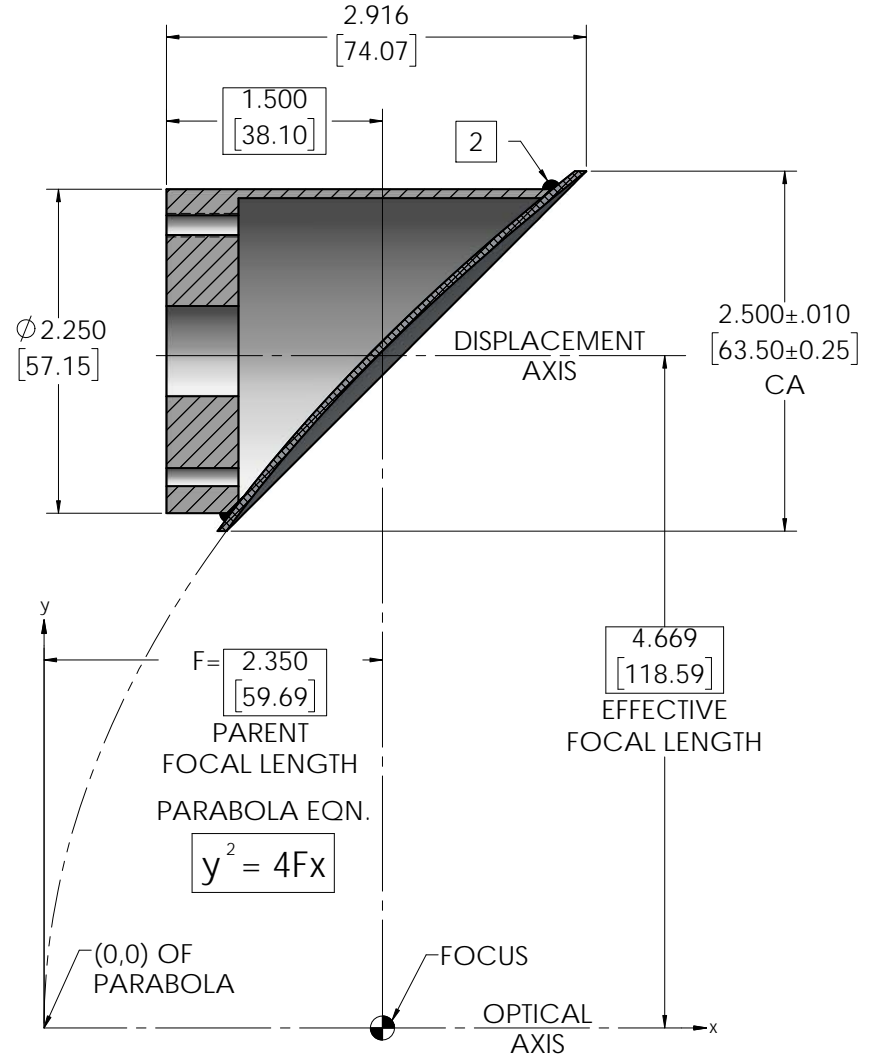
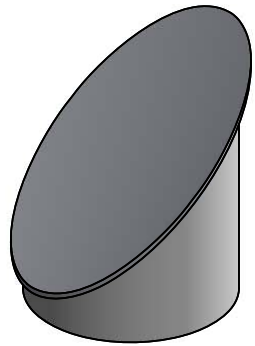
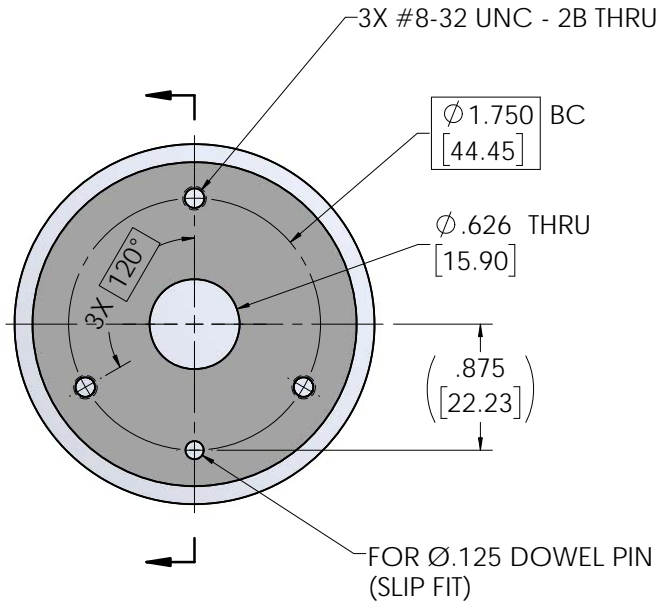


INFORMATION IN THIS DRAWING IS FOR REFERENCE ONLY

REVISIONS			
REV	DESCRIPTION	DATE	APPROVED
Ø	INITIAL DRAWING RELEASE	09/23/16	JMK
A	REVISED TO CURRENT STANDARDS	09/14/17	JPH

NOTES: UNLESS OTHERWISE SPECIFIED

- REFLECTOR SURFACE QUALITY: ELECTROFORM REFLECTOR FROM MASTER TOOL WITH SPECULAR SURFACE FINISH OF 80-50 SCRATCH-DIG PER MIL-O-13830A.
- MOUNT BONDED TO REFLECTOR USING EPOXY.
- REFLECTOR: ELECTROFORMED - NICKEL LSSN TYPE 1.
MOUNT: 6061-T6 ALUMINUM, BLACK ANODIZE FINISH.



UNLESS OTHERWISE SPECIFIED DIMENSIONS ARE IN INCHES [mm] GD&T PER ASME Y14.5-2009 DO NOT SCALE DRAWING		CONTRACT NO. 87-OAP60		optiforms® 42310 WINCHESTER RD. TEMECULA, CA 92590 WWW.OPTIFORMS.COM	
TOLERANCES		DRAWN JMK DATE 09/23/16	OFF-AXIS ASSY, PARABOLIC OAP60 SEGMENT		REV A
FRACTIONS ± 1/16	DECIMALS .XXX ± .02 .XXX ± .005	CHECKED DATE	SCALE 3:2		WT (REF) 0.33
ANGLES ± 1/2°		ENGR KMT DATE 09/23/16	CAD NO. OAP60		SHEET 1 OF 1
SURFACE ROUGHNESS √ 015 MAX CHAMFER THREADS Ø1 PAST ROOT DIAMETER		MATERIAL SEE NOTE 3		DWG. NO. OAP60-0000-XXXX	
DEBURR SHARP EDGES & HOLES (R) Ø.015 MAX		FINISH N/A		CAGE CODE 0Y1Y4	
THIRD ANGLE PROJECTION					