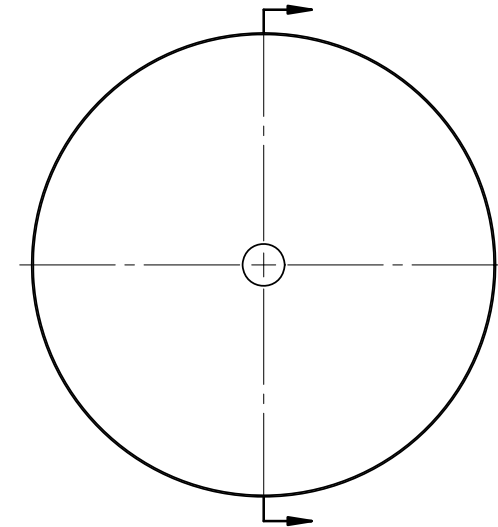
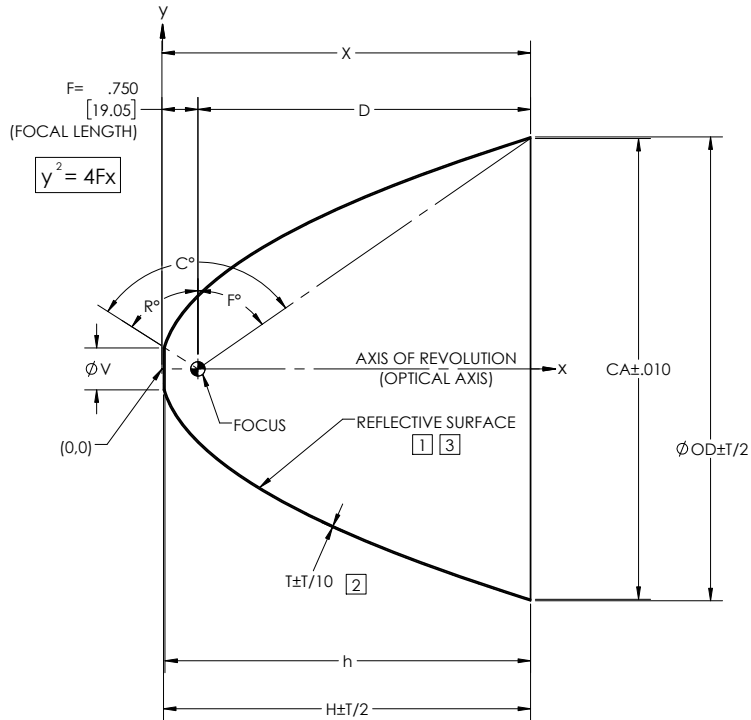


NOTES: UNLESS OTHERWISE SPECIFIED

- 1 ELECTROFORM REFLECTOR FROM MASTER TOOL WITH SPECULAR SURFACE QUALITY OF 80-50 SCRATCH-DIG PER MIL-PRF-13830B.
- 2 NOMINAL THICKNESS (T) MAY VARY ± T/4 WITHIN .25 OF EDGES.
- 3 REFLECTIVE SURFACE COATING TO BE SEPARATELY SPECIFIED.

| REVISIONS | | | |
|-----------|-------------------------------|----------|----------|
| REV | DESCRIPTION | DATE | APPROVED |
| Ø | INITIAL DRAWING RELEASE | 06/06/96 | GFW |
| A | REV DIM TOLERANCES | 02/10/98 | KMT |
| B | REV DIM TOLERANCES AND NOTES. | 07/01/98 | GFW |
| C | CORRECTED GEOMETRY DATA | 03/10/00 | GFW |
| D | ADDED -8 TO CHART | 06/14/05 | KMT |
| E | ADDED -9 TO CHART | 11/07/12 | RRS |
| F | UPDATED DRAWING FORMAT | 07/25/17 | JPH |



| DASH NO. | CA | V | OD | T | X | D | H | h | R° | F° | C° |
|----------|-------|-------|-------|-------|-------|-------|-------|-------|-------|-------|--------|
| P19 | 9.600 | 0.875 | 9.663 | 0.030 | 7.680 | 6.930 | 7.647 | 7.616 | 57.48 | 55.29 | 112.77 |
| P19-0100 | 6.000 | 0.875 | 6.067 | 0.030 | 3.000 | 2.250 | 2.967 | 2.936 | 57.48 | 36.87 | 94.35 |
| P19-0200 | 8.000 | 1.250 | 8.064 | 0.030 | 5.333 | 4.583 | 5.236 | 5.203 | 44.76 | 48.89 | 93.65 |
| P19-0300 | 9.600 | 1.750 | 9.663 | 0.030 | 7.680 | 6.930 | 7.459 | 7.425 | 29.49 | 55.29 | 84.78 |
| P19-0400 | 6.750 | 0.875 | 6.816 | 0.030 | 3.797 | 3.047 | 3.764 | 3.733 | 57.48 | 42.08 | 99.55 |
| P19-0500 | 8.000 | 1.750 | 8.064 | 0.030 | 5.333 | 4.583 | 5.113 | 5.078 | 29.49 | 48.89 | 78.38 |
| P19-0600 | 6.000 | 1.560 | 6.067 | 0.030 | 3.000 | 2.250 | 2.831 | 2.797 | 35.05 | 36.87 | 71.92 |
| P19-0700 | 4.842 | 0.875 | 4.913 | 0.030 | 1.954 | 1.204 | 1.921 | 1.890 | 57.48 | 26.44 | 83.92 |
| P19-0800 | 7.200 | 1.300 | 7.265 | 0.030 | 4.320 | 3.570 | 4.212 | 4.179 | 43.14 | 44.76 | 87.90 |
| P19-0900 | 6.000 | 2.125 | 6.067 | 0.030 | 3.000 | 2.250 | 2.660 | 2.624 | 19.38 | 36.87 | 56.25 |
| P19-1000 | 4.842 | 0.886 | 4.913 | 0.030 | 1.954 | 1.204 | 1.920 | 1.888 | 57.09 | 26.44 | 83.53 |

NOTE: THE "P19" DASH NO. IS THE THEORETICALLY LARGEST REFLECTOR THAT CAN BE FORMED ON EXISTING MASTER TOOLING.

| | | | | | |
|---|---------|-------------------------|------------------------------------|---|--------------|
| UNLESS OTHERWISE SPECIFIED DIMENSIONS ARE IN INCHES (mm) GD&T PER ASME Y14.5-2009 DO NOT SCALE DRAWING | | CONTRACT NO. 00-P19 | | 42310 WINCHESTER RD. TEMECULA, CA 92590 WWW.OPTIFORMS.COM | |
| TOLERANCES | | DRAWN JIW DATE 07/25/17 | optiforms | | |
| FRACTIONS ± 1/16 DECIMALS ± .02 ANGLES ± 1/2° | | CHECKED DATE | REFLECTOR, PARABOLIC | | |
| SURFACE ROUGHNESS | | ENGR RRS DATE 07/25/17 | .750" / 19mm FL | | |
| DEBURR SHARP EDGES & HOLE RIMS .015 MAX. CHAMFER THREADS .01 PAST ROOT DIAMETER | | MATERIAL | ELECTROFORMED NICKEL - LSSN TYPE 1 | | |
| THIRD ANGLE PROJECTION | | FINISH | SEE NOTES 1,3 | | |
| NEXT ASSY | USED ON | SCALE 1:2 | SIZE C | CAGE CODE OY1Y4 | DWG. NO. P19 |
| APPLICATION | | WT. (REF) | | CAD NO. P19 | REV F |
| | | SHEET 1 OF 1 | | | |