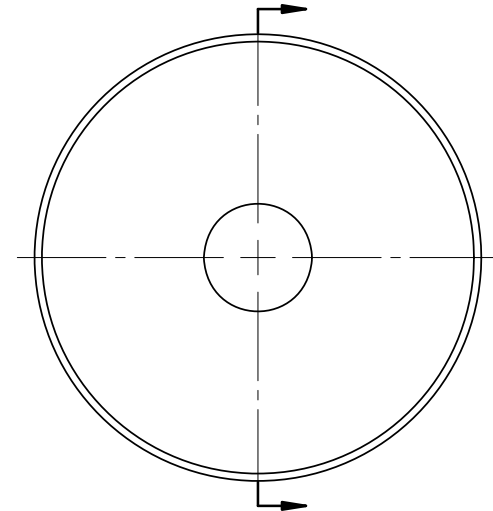
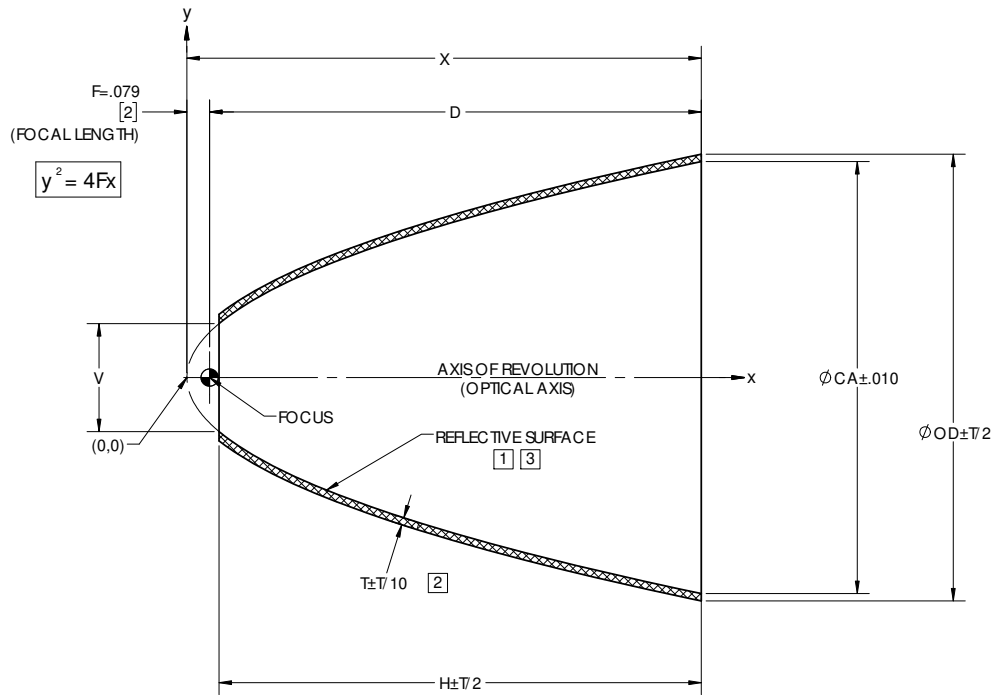


REVISIONS			
REV	DESCRIPTION	DATE	APPROVED
Ø	INITIAL DRAWING RELEASE	08/08/07	SJM
A	UPDATED DRAWING FORMAT	07/25/17	JPH

NOTES: UNLESS OTHERWISE SPECIFIED

- 1 ELECTROFORM REFLECTOR FROM MASTER TOOL WITH SPECULAR SURFACE QUALITY OF 80-50 SCRATCH-DIG PER MIL-PRF-13830B.
- 2 NOMINAL THICKNESS (T) MAY VARY ± T/4 WITHIN .25 OF EDGES.
- 3 REFLECTIVE SURFACE COATING TO BE SEPARATELY SPECIFIED.



DASH NO.	CA	V	OD	T	X	D	H
P2	1.500	0.375	1.5511	0.025	1.786	1.707	1.674
P2-0100	1.500	1.000	1.5511	0.025	1.786	1.707	0.992
P2-0200	1.500	0.375	1.5511	0.025	1.786	1.707	1.674

NOTE: THE "P2" DASH NO. IS THE THEORETICALLY LARGEST REFLECTOR THAT CAN BE FORMED ON EXISTING MASTER TOOLING.

UNLESS OTHERWISE SPECIFIED DIMENSIONS ARE IN INCHES (mm) GD&T PER ASME Y14.5-2009 DO NOT SCALE DRAWING		CONTRACT NO. 07-P2		42310 WINCHESTER RD. TEMECULA, CA 92590 WWW.OPTIFORMS.COM	
FRACTIONS ± 1/16	DECIMALS ± .02	ANGLES ± 1/2°	DRAWN JIW	DATE 07/25/17	
TOLERANCES	.000 ± .005	± 1/2°	CHECKED	DATE	
SURFACE ROUGHNESS 63/			BGR FFS	DATE 07/25/17	REFLECTOR, PARABOLIC .079" / 2mm FL
DEBURR SHARP EDGES & HOLES RAG 015 MAX. CHAMFER 3X RADIUS 01 RAST FOOT DIAMETER			MATERIAL		
NEXT ASSY	USED ON	THIRD ANGLE PROJECTION	FINISH	ELECTROFORMED NICKEL - LSSN TYPE 1	SIZE C
APPLICATION		SEE NOTES 1,3	SCALE 3:1	WT. (REF) 0.047 lbs.	CAGE CODE 0Y1Y4
				CAD NO. P2	DWG. NO. P2
				SHEET	REV A
				1 OF 1	