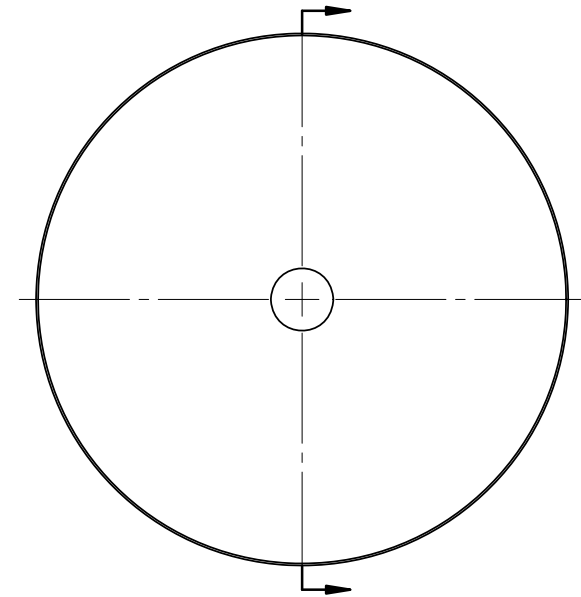
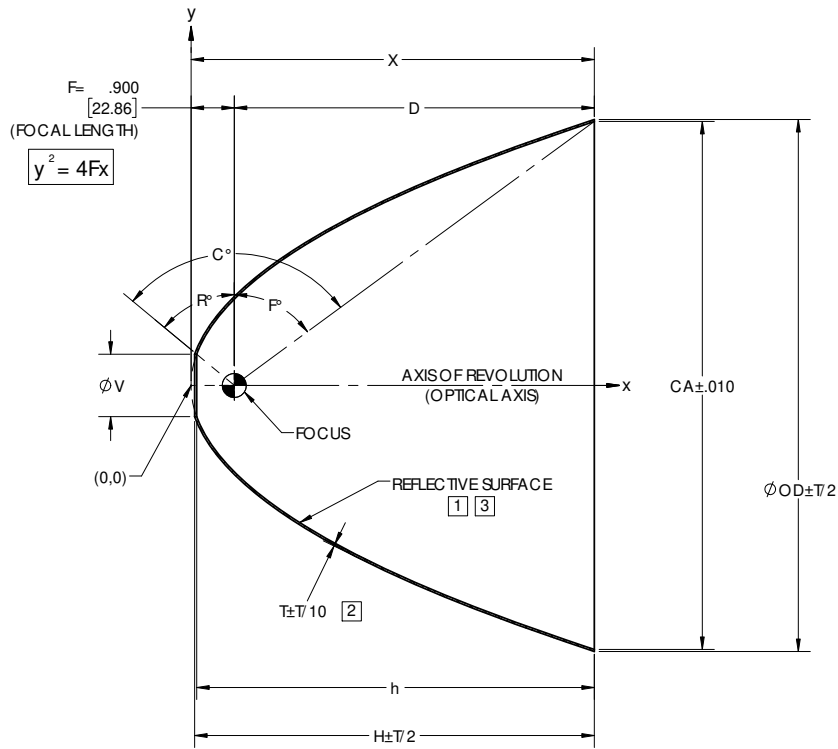


REVISIONS			
REV	DESCRIPTION	DATE	APPROVED
Ø	INITIAL DRAWING RELEASE	03/09/04	GRW
A	UPDATED DRAWING FORMAT	07/25/17	JPH

NOTES: UNLESS OTHERWISE SPECIFIED

- 1 ELECTROFORM REFLECTOR FROM MASTER TOOL WITH SPECULAR SURFACE QUALITY OF 80-50 SCRATCH-DIG PER MIL-PRF-13830B.
- 2 NOMINAL THICKNESS (T) MAY VARY ± T/4 WITHIN .25 OF EDGES.
- 3 REFLECTIVE SURFACE COATING TO BE SEPARATELY SPECIFIED.



DASH NO.	CA	V	OD	T	X	D	H	h	R°	F°	C°
P23	11.000	1.300	11.084	0.040	8.403	7.503	8.328	8.285	50.29	53.76	104.05
P23-0100	7.000	2.250	7.090	0.040	3.403	2.503	3.098	3.051	25.99	35.57	61.56
P23-0200	9.500	2.250	9.586	0.040	6.267	5.367	5.963	5.916	25.99	48.49	74.48
P23-0300	11.000	2.250	11.084	0.040	8.403	7.503	8.098	8.051	25.99	53.76	79.75
P23-0400	7.000	1.300	7.090	0.040	3.403	2.503	3.328	3.285	50.29	35.57	85.86

NOTE: THE "P23" DASH NO. IS THE THEORETICALLY LARGEST REFLECTOR THAT CAN BE FORMED ON EXISTING MASTER TOOLING.

UNLESS OTHERWISE SPECIFIED DIMENSIONS ARE IN INCHES [mm] GD&T PER ASME Y14.5-2009 DO NOT SCALE DRAWING		CONTRACT NO. 04-P23		42310 WINCHESTER RD. TEMECULA, CA 92590 WWW.OPTIFORMS.COM	
TOLERANCES		DRAWN JIW DATE 07/25/17			
FRACTIONS ± 1/16 DECIMALS ± .02 ANGLES ± 1/2°		CHECKED DATE			
SURFACE FINISH		ENGR PFS DATE 07/25/17	REFLECTOR, PARABOLIC .900" / 22.9mm FL		
DEBURR SHARP EDGES & HOLES RNS 015 MAX. CHAMFER 3X RADIUS 01 RAST FOOT DIAMETER		MATERIAL	ELECTROFORMED NICKEL - LSSN TYPE 1		
THIRD ANGLE PROJECTION	FINISH	SCALE 1:2	CAGE CODE 0Y1Y4	DWG. NO. P23	REV A
APPLICATION	SEE NOTES 1,3	WT. (REF)	CAD NO. P23	SHEET 1 OF 1	