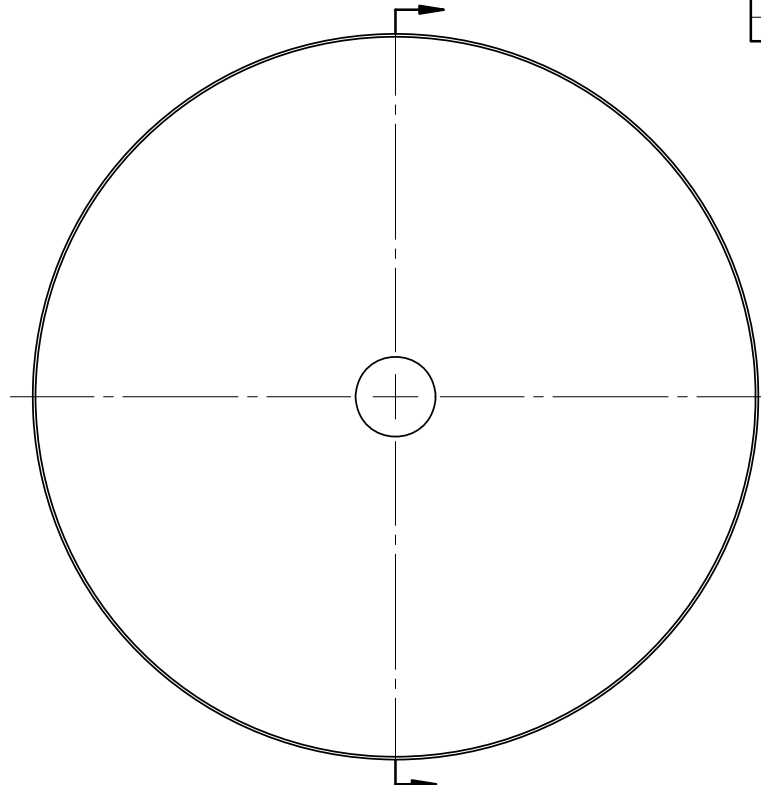
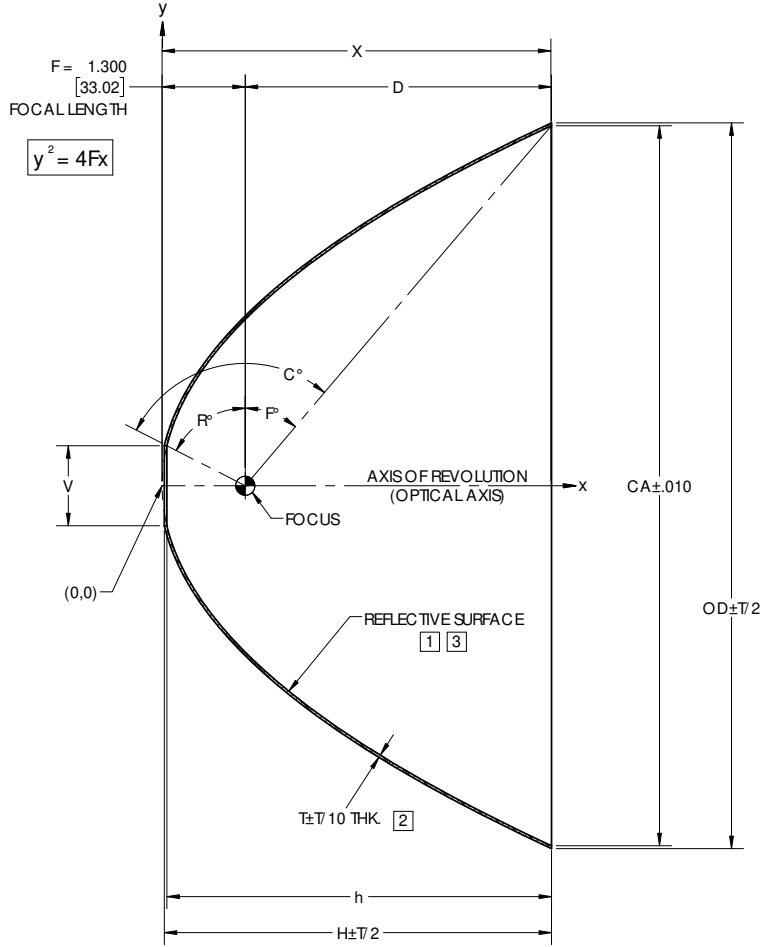


NOTES: UNLESS OTHERWISE SPECIFIED

- 1 ELECTROFORM REFLECTOR FROM MASTER TOOL WITH SPECULAR SURFACE QUALITY OF 80-50 SCRATCH-DIG PER MIL-PRF-13830B.
- 2 NOMINAL THICKNESS (T) MAY VARY ± T/4 WITHIN .25 OF EDGES.
- 3 REFLECTIVE SURFACE COATING TO BE SEPARATELY SPECIFIED.



| REVISIONS | | | |
|-----------|--|----------|----------|
| REV | DESCRIPTION | DATE | APPROVED |
| Ø | INITIAL DRAWING RELEASE | 06/06/96 | GRW |
| A | ADDED -03 | 10/14/97 | KMT |
| B | REV DIM TOLERANCES | 07/24/17 | KMT |
| C | REV DIM TOLERANCES | 07/24/17 | GRW |
| D | ADDED -04 | 07/24/17 | MSP |
| E | ADDED -05 AND -06 | 07/24/17 | GRW |
| F | ADDED -07 | 07/24/17 | SJM |
| G | Ø2.000 VERTEX WAS Ø2.010, 3.933 WAS 3.991, 4.036 WAS 4.034, 79.66° WAS 79.46°, 47.92° WAS 47.73° | 07/24/17 | SJM |
| H | ADDED -08 | 07/24/17 | SJM |
| J | ADDED -09 | 07/24/17 | PFS |
| K | UPDATED DRAWING FORMAT | 07/24/17 | JPH |

| DASH NO. | CA | V | OD | T | X | D | H | h | R° | F° | C° |
|----------|--------|-------|--------|-------|-------|-------|-------|-------|-------|-------|--------|
| P33 | 11.250 | 1.250 | 11.338 | 0.040 | 6.085 | 4.785 | 6.051 | 6.010 | 62.97 | 40.39 | 103.35 |
| P33-0100 | 11.250 | 2.500 | 11.338 | 0.040 | 6.085 | 4.785 | 5.829 | 5.784 | 38.65 | 40.39 | 79.03 |
| P33-0200 | 9.850 | 3.000 | 9.940 | 0.040 | 4.665 | 3.365 | 4.278 | 4.232 | 30.04 | 34.34 | 64.38 |
| P33-0300 | 9.500 | 1.750 | 9.591 | 0.040 | 4.339 | 3.039 | 4.234 | 4.192 | 52.80 | 32.61 | 85.41 |
| P33-0400 | 9.330 | 2.000 | 9.422 | 0.040 | 4.185 | 2.885 | 4.036 | 3.993 | 47.92 | 31.73 | 79.66 |
| P33-0500 | 9.000 | 1.625 | 9.092 | 0.040 | 3.894 | 2.594 | 3.809 | 3.767 | 55.29 | 29.96 | 85.26 |
| P33-0600 | 11.250 | 3.000 | 11.338 | 0.040 | 6.085 | 4.785 | 5.698 | 5.652 | 30.04 | 40.39 | 70.42 |
| P33-0700 | 10.250 | 1.250 | 10.340 | 0.040 | 5.051 | 3.751 | 5.017 | 4.976 | 62.97 | 36.20 | 99.17 |
| P33-0800 | 9.446 | 3.937 | 9.537 | 0.040 | 4.290 | 2.990 | 3.595 | 3.545 | 15.74 | 32.33 | 48.07 |
| P33-0900 | 9.330 | 3.150 | 9.422 | 0.040 | 4.185 | 2.885 | 3.755 | 3.708 | 27.59 | 31.73 | 59.32 |

NOTE: THE "P33" DASH NO. IS THE THEORETICALLY LARGEST REFLECTOR THAT CAN BE FORMED ON EXISTING MASTER TOOLING.

| | | | | | |
|---|---------|-------------------------|------------------------------------|---|--------------|
| UNLESS OTHERWISE SPECIFIED DIMENSIONS ARE IN INCHES (mm) G06 TPER ASME Y14.5-2009 DO NOT SCALE DRAWING | | CONTRACT NO. 96-P33 | | 42310 WINCHESTER RD. TEMECULA, CA 92590 WWW.OPTIFORMS.COM | |
| TOLERANCES | | DRAWN JIW DATE 07/24/17 | optiforms | | |
| FRACTIONS ± 1/16 DECIMALS ± .02 ANGLES ± 1/2° | | CHECKED DATE | REFLECTOR, PARABOLIC | | |
| SURFACE ROUGHNESS 63/ | | ENGR PFS DATE 07/24/17 | 1.300" / 33mm FL | | |
| DEBURR SHARP EDGES & HOLES RAG 015 MAX. CHAMFER 3:1 HEADS 01 PART FOOT DIAMETER | | MATERIAL | ELECTROFORMED NICKEL - LSSN TYPE 1 | | |
| THIRD ANGLE PROJECTION | | FINISH | NO TES 1,3 | | |
| NEXT ASY | USED ON | SCALE 2:3 | SIZE C | CAGE CODE 0Y1Y4 | DWG. NO. P33 |
| APPLICATION | | WT. (REF) | CAD NO. P33 | REV K | SHEET 1 OF 1 |