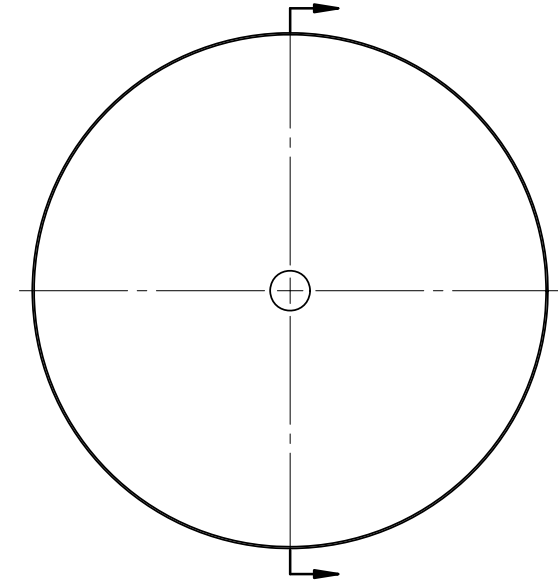
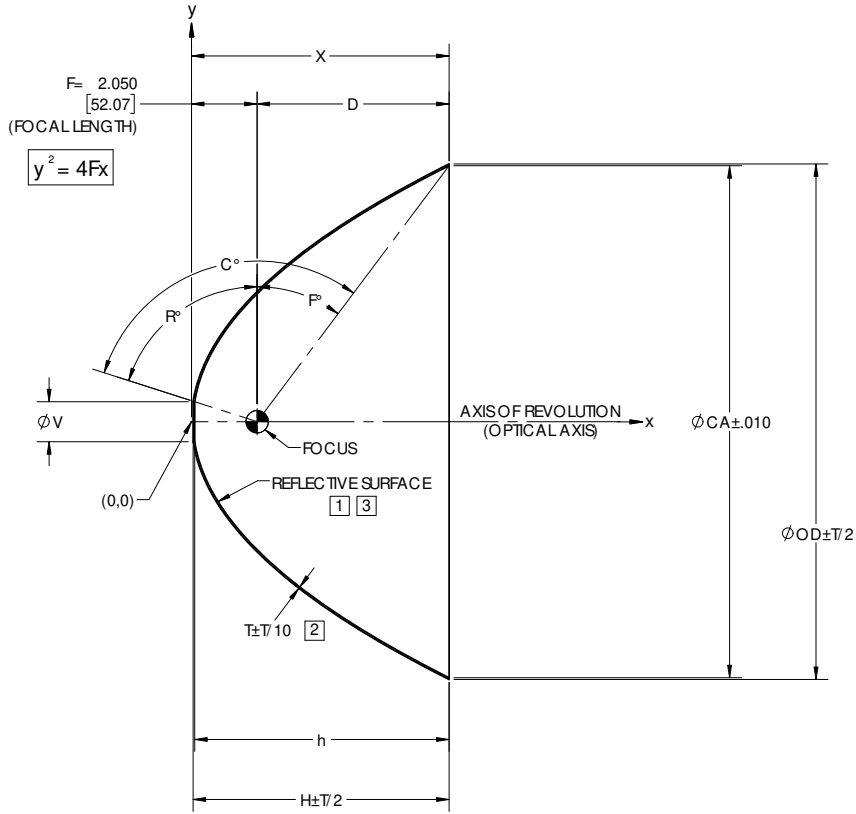


REVISIONS			
REV	DESCRIPTION	DATE	APPROVED
Ø	INITIAL DRAWING RELEASE	09/16/05	TAK
A	ADDED -3	02/06/06	JJC
B	ADDED -4	08/08/07	SJM
C	UPDATED DRAWING FORMAT	07/26/17	JPH

NOTES: UNLESS OTHERWISE SPECIFIED

- 1 ELECTROFORM REFLECTOR FROM MASTER TOOL WITH SPECULAR SURFACE QUALITY OF 80-50 SCRATCH-DIG PER MIL-PRF-13830B.
- 2 NOMINAL THICKNESS (T) MAY VARY ± T/4 WITHIN .25 OF EDGES.
- 3 REFLECTIVE SURFACE COATING TO BE SEPARATELY SPECIFIED.



DASH NO.	CA	V	OD	T	X	D	H	h	R°	F°	C°
P51	16.000	1.250	16.112	0.050	8.000	6.000	8.002	7.951	72.24	36.87	109.11
P51-0100	16.000	3.940	16.112	0.050	8.000	6.000	7.571	7.515	37.56	36.87	74.43
P51-0200	12.084	1.575	12.204	0.050	4.563	2.563	4.537	4.486	67.72	22.99	90.71
P51-0300	16.000	2.500	16.112	0.050	8.000	6.000	7.857	7.805	55.29	36.87	92.16
P51-0400	16.000	1.250	16.112	0.050	8.000	6.000	8.002	7.951	72.24	36.87	109.11
P51-0500	16.000	3.810	16.112	0.050	8.000	6.000	7.602	7.546	39.07	36.87	75.94

NOTE: THE "P51" DASH NO. IS THE THEORETICALLY LARGEST REFLECTOR THAT CAN BE FORMED ON EXISTING MASTER TOOLING.

UNLESS OTHERWISE SPECIFIED DIMENSIONS ARE IN INCHES (mm) GD&T PER ASME Y14.5-2009 DO NOT SCALE DRAWING		CONTRACT NO. 04-P51		42310 WINCHESTER RD. TEMECULA, CA 92590 WWW.OPTIFORMS.COM	
TOLERANCES		DRAWN JIW DATE 07/26/17	optiforms		REFLECTOR, PARABOLIC 2.00" / 51mm FL
FRACTIONS ± 1/16	DECIMALS .XXX ± .02 .000 ± .005	CHECKED DATE	DATE 07/26/17		
SURFACE ROUGHNESS 63/		ENGR FFS DATE 07/26/17	MATERIAL		SIZE C
DEBURR SHARP EDGES & HOLES FINIS 015 MAX. CHAMFER 3:1 RADIUS .01 RAST FOOT DIAMETER		FINISH		ELECTROFORMED NICKEL - LSSN TYPE 1	
NEXT ASSY	USED ON	APPLICATION		SCALE 1:3	WT. (REF)
THIRD ANGLE PROJECTION		SEE NOTES 1,3		CAD NO. P51	REV C