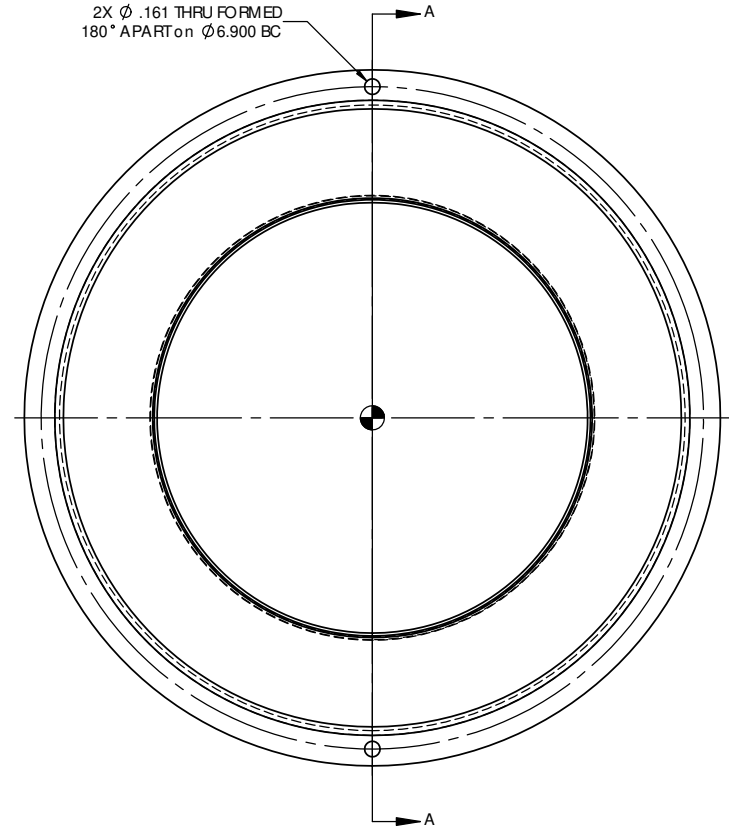
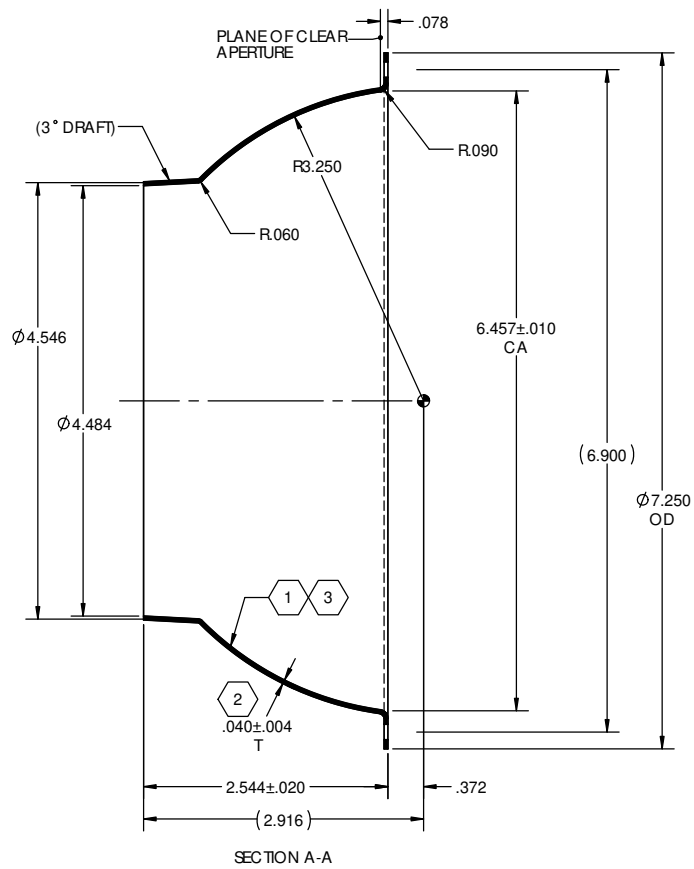


NOTES: UNLESS OTHERWISE SPECIFIED

- 1 ELECTROFORM REFLECTOR FROM MASTER TOOL WITH SPECULAR SURFACE FINISH OF 80-50 SCRATCH-DIG PER MIL-O-13830A.
- 2 NOMINAL THICKNESS (T) MAY VARY  $\pm$  T/4 WITHIN .25 OF EDGES.
- 3 REFLECTIVE SURFACE COATING TO BE SEPARATELY SPECIFIED.
- 4 FOR SPECIFIC CUSTOMER FEATURES, SEE DRAWINGS S3250-0100-XX.

REVISIONS			
REV.	DESCRIPTION	DATE	APPROVED
Ø	INITIAL DRAWING RELEASE	4/27/1999	KMT
A	REVISED TO GENERIC STANDARD PRODUCT	7/26/2000	MSP
B	INITIAL SOLIDWORKS DRAWING RELEASE	11/9/2011	JEH



EF SURFACE AREA = 0.3899 SQ. FT.

UNLESS OTHERWISE SPECIFIED DIMENSIONS ARE IN INCHES (mm) GD&T PER ASME Y14.5-2009 DO NOT SCALE DRAWING		CONTRACT NO. 99-S3250		42310 WINCHESTER RD. TEMECULA, CA 92590 WWW.OPTIFORMS.COM	
TOLERANCES		DRAWN JEH	DATE 11/09/11	REFLECTOR - SPHERICAL OF STD PRODUCTS	
FRACTIONS .XX ± .02 ± 1/2"		CHECKED	DATE		
DECIMALS .XXX ± .005		ENGR KMT	DATE 11/09/11	SIZE C	
ANGLES		MATERIAL 6061-T6 (SS)		CAGE CODE 0Y1Y4	
SURFACE ROUGHNESS		FINISH SEE NOTES 1 & 3		DWG. NO. S3250-0100	
DEBURR CHAMFER EDGES .015 MAX CHAMFER 3/8 READS .01 PAST ROOT DIAMETER		SCALE 1:1		REV B	
THIRD ANGLE PROJECTION		WT 0.218 lbs.		SHEET 1 OF 1	
APPLICATION		CAD NO. S3250			