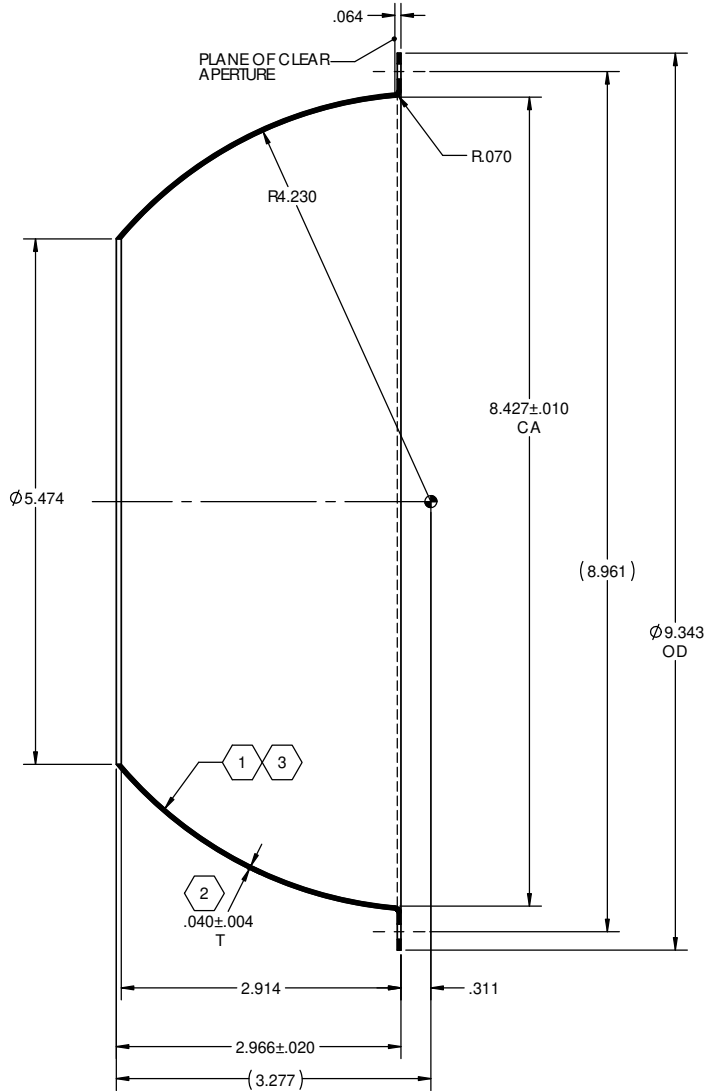


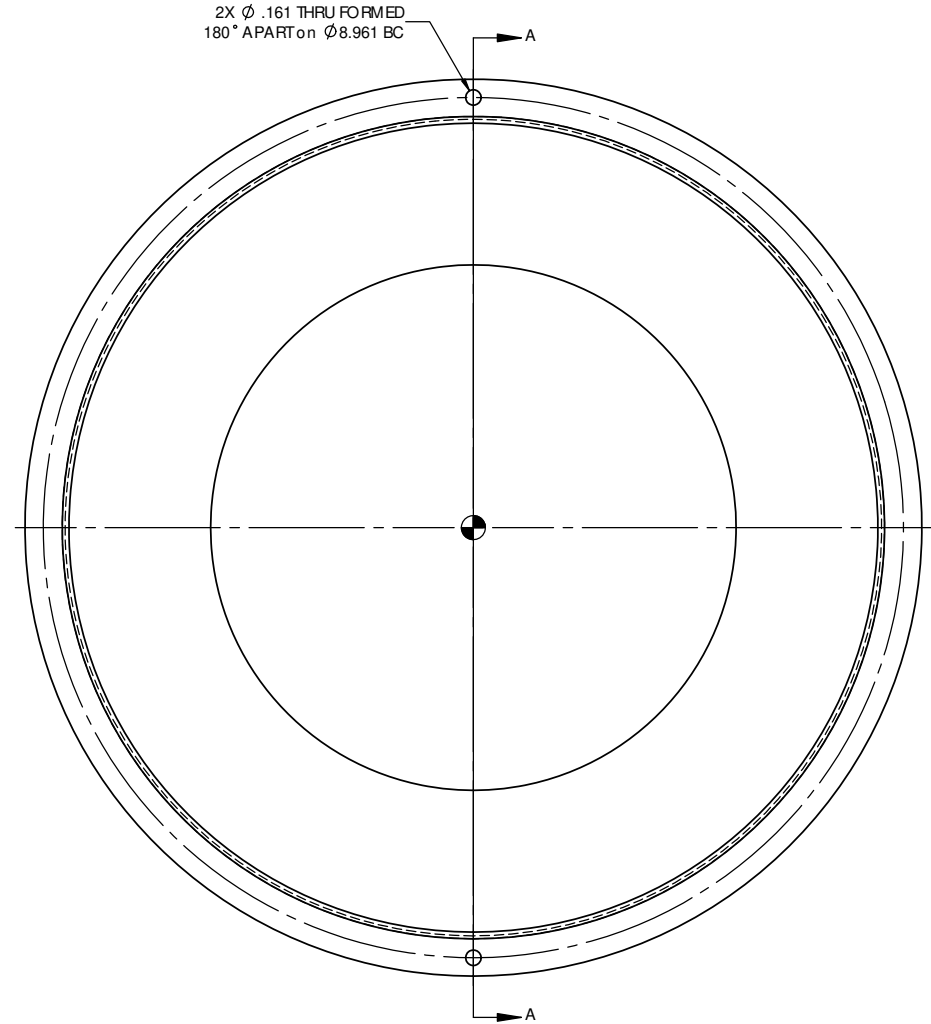
NOTES: UNLESS OTHERWISE SPECIFIED

- 1 ELECTROFORM REFLECTOR FROM MASTER TOOL WITH SPECULAR SURFACE FINISH OF 80-50 SCRATCH-DIG PER MIL-O-13830A.
- 2 NOMINAL THICKNESS (T) MAY VARY \pm T/4 WITHIN .25 OF EDGES.
- 3 REFLECTIVE SURFACE COATING TO BE SEPARATELY SPECIFIED.
- 4 VERTEX HOLE OPENING IS PREFERRED REGISTRATION FEATURE FOR AXIAL ALIGNMENT OF REFLECTOR. PLANE OF CLEAR APERTURE NOT RECOMMENDED FOR THIS PURPOSE.
- 5 FOR SPECIFIC CUSTOMER FEATURES, SEE DRAWINGS S4230-0100-XX.


REVISIONS			
REV.	DESCRIPTION	DATE	APPROVED
Ø	INITIAL DRAWING RELEASE	12/07/1999	MSP
A	REVISED TO GENERIC STANDARD PRODUCT	7/26/2000	MSP
B	INITIAL SOLIDWORKS DRAWING RELEASE	05/25/12	JEH



SECTION A-A



EF SURFACE AREA = 0.6211 SQ. FT.

UNLESS OTHERWISE SPECIFIED DIMENSIONS ARE IN INCHES (mm) GD&T PER ASME Y14.5-2009 DO NOT SCALE DRAWING		CONTRACT NO.		 42310 WINCHESTER RD. TEMECULA, CA 92590 WWW.OPTIFORMS.COM	
TOLERANCES	FRACTIONS DECIMALS ANGLES	DRAWN	DATE	REFLECTOR - SPHERICAL	
± .116 .XX ± .02 ± 1/2°	XXX ± .005	JEH	11/09/11	OF STD PRODUCTS	
SURFACE ROUGHNESS	DEBURR CHAMFER EDGES .015 MAX	CHECKED	DATE	SIZE	CAGE CODE
CHAMFER 3/8 THREADS .01 RAST ROD DIAMETER		KMT	11/09/11	C	0Y1Y4
		MATERIAL		DWG. NO.	S4230-0100
		6061-T6 (SS)		REV	B
NEXT ASSY	USED ON	FINISH	SEE NOTES 1 & 3	SCALE	1:1
				WT	0.345 lbs.
				CAD NO.	S4230
				SHEET	1 OF 1